

ELL Program Budget Presentation 2024-25



Overview

- 2032 students are identified as ELL.
- 1720 are active students and 312 are in monitor. Families have the option to accept or decline ELL services. Students who have accepted ELL services receive direct instruction from an ELL teacher and monitored students are tracked for progress by ELL teachers for 4 years.
- New Hampshire is a part of a consortium comprised of 41 states, territories, and federal agencies that uses WIDA Standards. The WIDA Consortium uses the ACCESS test to assess yearly progress in English proficiency.
- 51.8 FTE ELL Teachers are in the program. Last year, 6.8 were funded by ESSR. Those positions were moved to the operating budget for the 2024-25 school year.

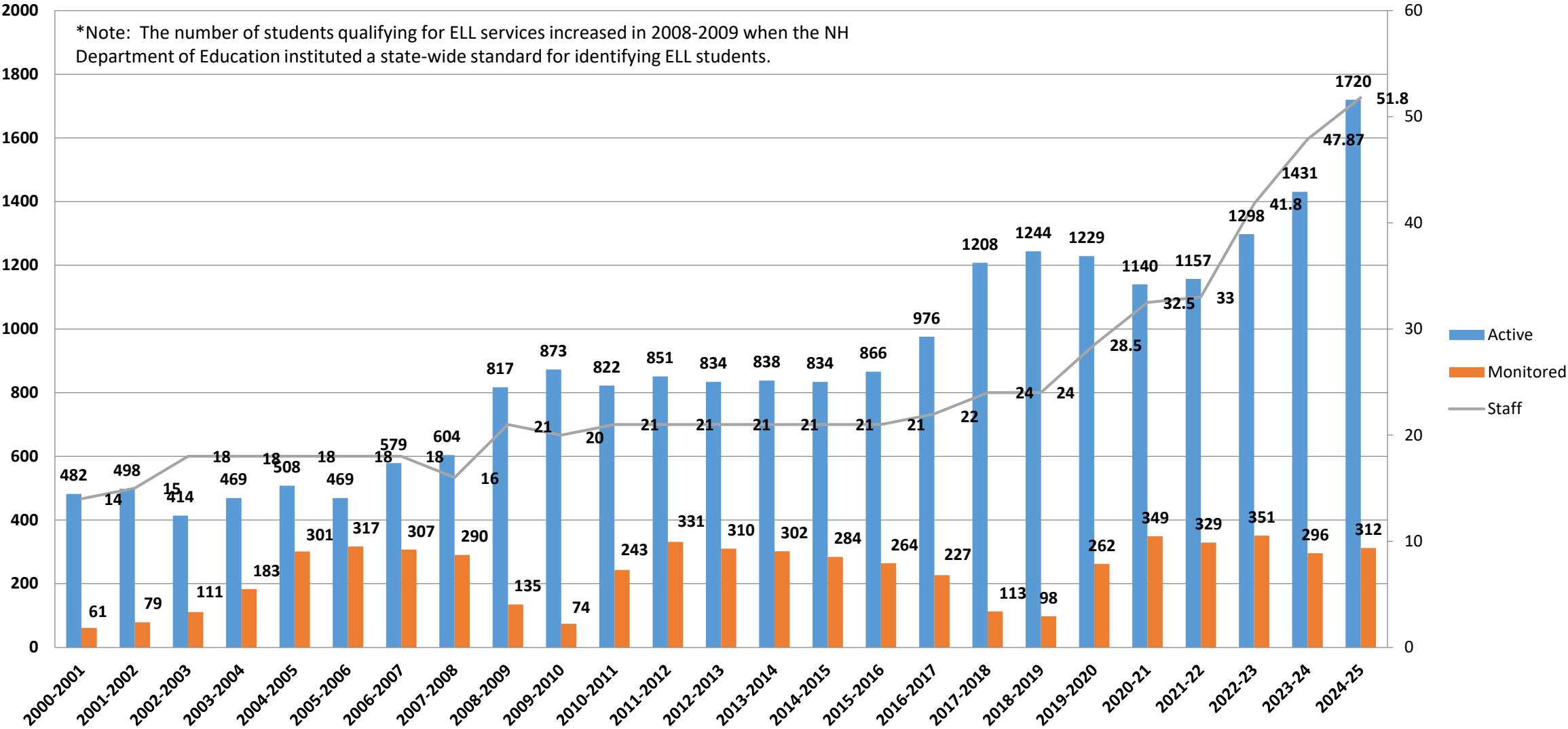
Who are the ELL Students?

- 48 Languages are spoken in the program
 - 61% Spanish speakers
 - 13.5% Portuguese speakers
- Students come from 59 countries
 - 47% of the program was born in the United States
 - 5% are from Puerto Rico
 - 11% are from Brazil
 - 10% are from the Dominican Republic
- Proficiency Levels of active ELs
 - 32% are Level 1.0-1.9
 - 23% are Level 2.0-2.9
 - 33% are Level 3.0-3.9
 - 12% are Level 4.0-4.4



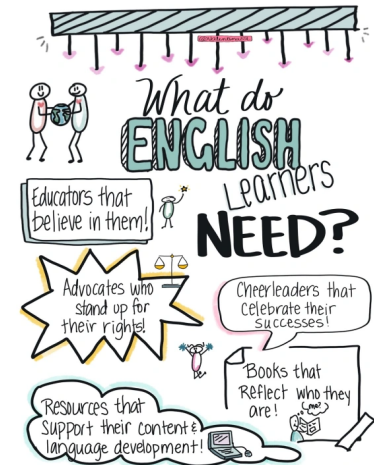
20 Year ELL Growth Pattern at Schools with ELL Programs

(Active and Monitored ELL Status)



DOJ Agreement Priorities

- Identification and Placement
- Provision of EL Services and Access to Core Curriculum
- Staffing and Professional Development
- EL Access to Special Services
- Curriculum and Resources
- Communications
- Program Monitoring and Evaluation
- Reporting



DOJ Priority- Identification and Placement of ELL Students

HOW IS THE DISTRICT ADDRESSING THIS CONCERN?

- Nashua School District will implement a Central Registration site.
 - Consistent data entry
 - Consistent screening and identification of ELL students.
 - Ease of registration for families enrolling more than one child
 - Ease of access for families to information about special services, i.e. Special Education, ELL, McKinney-Vento, etc.

DOJ Priority- Provision of ELL Services and Access to the Core Curriculum

HOW IS THE DISTRICT ADDRESSING THIS CONCERN?

- The District continues to add ELL teachers to ensure that all ELL students receive the proper amount of ELL instruction.
- The District continues to provide ELL focused professional development to ensure that teachers of English, math, science, and social studies classes are proficient in the use of sheltered instructional strategies.

DOJ Priority- Staffing and Professional Development- Staffing

HOW IS THE DISTRICT ADDRESSING THIS CONCERN?

- The ELL department teaching staff has increased from 32.5 in the 2020-2021 school year to 51.8 in the 2024-25 school year.
- An additional 8 positions are hoped to be added to the operating budget for the 2025-26 school year.
 - ELL Elementary Teaching positions
 - ELL/SPED Teacher(s)

DOJ Priority- Staffing and Professional Development- Professional Development

HOW IS THE DISTRICT ADDRESSING THIS CONCERN?

- The District will be submitting a professional development plan to the DOJ before April 15, 2025 for the 2025-2026 school year.
- The plan will focus on using data from administrator walk-throughs to identify instructional areas of focus.

DOJ Priority- ELL and Special Services

HOW IS THE DISTRICT ADDRESSING THIS CONCERN?

- One of the ELL elementary positions will focus on serving dually identified elementary intensive needs programs.
- The District has planned joint professional development opportunities for the ELL and Special Education departments to identify areas of improvement and develop protocols to improve collaboration between the two departments.

DOJ Priority-Curriculum and Resources

HOW IS THE DISTRICT ADDRESSING THIS CONCERN?

- Three years ago, NSD purchased the Vista curriculum for grades K-8.
- Last school year, NSD purchased Houghton Mifflin Harcourt's English 3D curriculum for grades 9-12.
- The ELL department uses Title III funds to provide all ELL teachers with professional development on the curricula that they are using to instruct students.

DOJ Priority-Communications

HOW IS THE DISTRICT ADDRESSING THIS CONCERN?

- This school year, all Family Engagement Coordinators were moved from 18-21 hours per week to full-time.
- All Title 1 schools, the three middle schools, and both high schools are covered by a Spanish-speaking Family Engagement Coordinator. In our schools with lower populations of English language learners (Bicentennial Elementary, Broad Street, Charlotte Avenue, Main Dunstable, and New Searles and Sunset Heights), 1.6 floating Spanish-speaking districtwide Family Engagement Coordinators provide support. Additionally, 2 districtwide Portuguese speaking Family Engagement Coordinators will perform the same duties amongst all schools.
- The ELL department has developed systems to ensure that essential documents, like IEPs, are translated for parents who have requested to have documents translated.
- The District has also developed systems to ensure that highly qualified interpreters are available upon request for parent meetings.

Program Accomplishments

- 111 students reached proficiency on the ACCESS/Alternate ACCESS test.

Composite Level Growth

